

CaterWauling Flange Pillow

A Free Project from Whistlepig Creek Productions

Ingredients:

1 Panel from Caterwauling Tales
1" wide scraps of Solid White (Panel Border)
2" square scraps of Solid Black (Panel Corners)
1/16 yard Blue Stripe (Border 1)
1/8 yard Purple Filigree (Border 2)
1/8 yard Pink Stripe (Border 3)

1/4 yard Flowers on Black (Flange)
1/2 yard Frame Toss on Teal (Backing)
1/4 yard Pink Filigree (Binding)
1 - 24" square (Inside of Pillow)
1 - 24" square of Batting
1 - 16" Pillow Form

Cutting Instructions:

Panels Cut to be 7" squared
White 2 - 1" x 7" pieces
2 - 1" x 8" pieces
Black 4 - 2" squares
Blue Stripe 2 - 1 1/2" x 8" pieces
2 - 1 1/2" x 10" pieces
Purp Filigree 2 - 2 1/2" x 10" pieces
2 - 2 1/2" x 14" pieces

Pink Stripe 2 - 1 1/2" x 14" pieces
2 - 1 1/2" x 16 1/2" pieces
Flowers 2 - 2 1/2" x 16 1/2" pieces
2 - 1 1/2" x 20 1/2" pieces
Teal Frames Cut half yard in half to create
2 fat quarter pieces
Binding 3 - 2 1/2" x WOF strips

Sewing Instructions:

*** All Seams are sewn with 1/4"

Sew the 1" x 7" white pieces to the left and right sides of the Panel Pieces. Press away from the white.

Sew the 1" x 8" white pieces to the top and bottom of the Panel Pieces. Press towards the Panel.

Place a Black square in each corner and sew diagonally. (Diagram 1) Cut out center piece and Press. (Diagram 2)

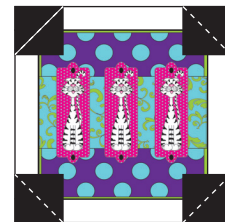


Diagram 1

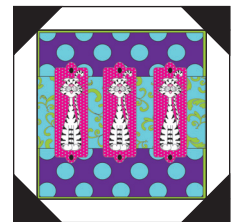


Diagram 2

Sew Border 1 (Blue Stripe) onto the Panel. Start by sewing the 8" x 1 1/2" pieces to the right and left sides. Press Outwards. Next sew on the 10" x 1 1/2" pieces to the top and bottom. Press outwards. (Diagram 3)

Sew Border 2 (Purple Filigree) onto the center. Start by sewing the 2 1/2" x 10" pieces to the left and right sides. Press outwards. Next sew on the 14" x 1 1/2" pieces to the top and bottom. Press outwards. (Diagram 4)

Sew Border 3 (Pink Stripe) onto the center. Start by sewing the 2 1/2" x 14" pieces to the left and right sides. Press outwards. Next sew on the 16 1/2" x 1 1/2" pieces to the top and bottom. Press outwards. (Diagram 5)

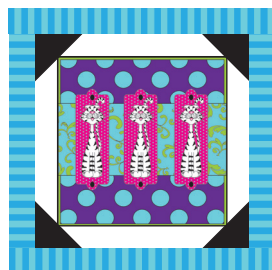


Diagram 3

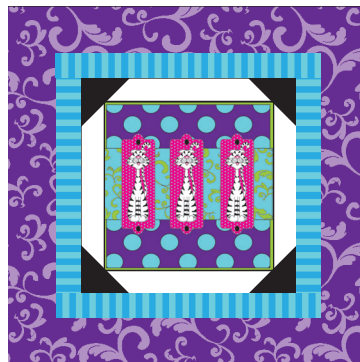


Diagram 4



Diagram 5

Sew the Flange (Black Flower) onto the center. Start by sewing the 2 1/2" x 16 1/2" pieces to the left and right sides. Press outwards. Next sew on the 20 1/2" x 1 1/2" pieces to the top and bottom. Press outwards. (Diagram 6)

Finishing the Pillow Front:

Layer the Finished pillow front, batting and inside piece. Quilt as desired. (We heavily quilted the center part and left the flange open. It allows the flange to be more flexible.)

Skip this step if you would like a lighter weight pillow.

Making & Attaching the Pillow Back:

Take one of the back pieces you cut and fold one 18" (approximately) side over 1/2" and press flat with an iron. Fold again and press. Pin it in place and stitch down the fold, sewing about 1/4" in from the folded edge. Repeat with the second back piece. Lay the two back pieces right sides down with the folded pieces in the middle overlapped by about 3 inches. Layer the Pillow front right side up and pin. (Diagram 7) Stitch between Border 3 and the Flange. Using a Stitch in the Sitch foot would look best. Trim the edges.

Finishing the Pillow:

Sew binding strips end to end, sewing on diagonal.

Bind the pillow with your favorite technique. Stuff it with 16" pillow form and Enjoy!



Diagram 6

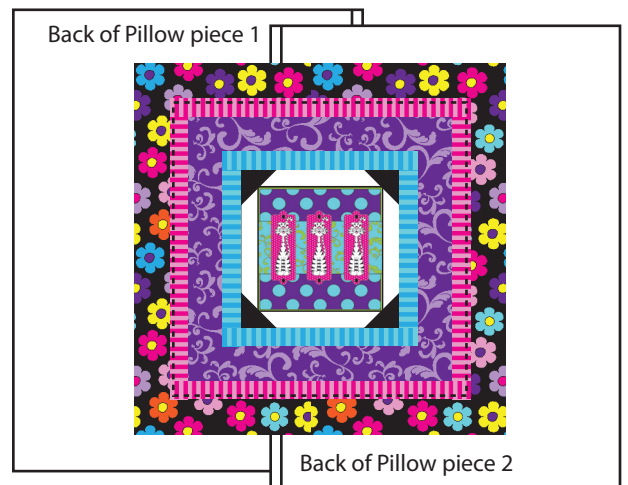


Diagram 7